

Y444SBH Series

11-Ton C-Head Dieless Remote Crimper Remote Operated Hydraulic Tool

- New C-Head style for easy access and increased flexibility
- Dieless System with range taking capability
- Qualified on both UL and ANSI connections

For Use On:

Copper #4 - 1000 kcmil Code & Flex

Terminals: YA-L, YA-2LN, YA, YA-2N, YA-L-2TC, YAB-4N, YA-L-TC, YA-2L, YA-4N, YAV, YAZ, YA-L-FX, YA-FXB, YBA, YAG

Splices: YS-L, YS, YS-T

Copper #4 - 1000 kcmil Code; #2 - 777 kcmil Flex

HYPLUG™: YE-P, YE-P-FX, YEV-P-FX

Aluminum #4 - 1000 kcmil

Terminals: YA-A, YA-A-TN

Splices: YS-A

HYPLUG™: AYP, AYPO

ACSR, AAC, AAAC, ACAR #4 AWG - 556.6 kcmil

Splices: YDS-RL, YDS-RLNI

See Expanded Range details in Reference Section

Variations:

Y444SBH Tool with male couplers
Y444SBHF Tool with female couplers

Connections are UL Listed to UL 486A-486B
on Copper & Aluminum terminals and splices;

Also, comply with ANSI C119.4
on YDS-RL Splices and New YDS-RLNI Splices
(ACSR, AAC, AAAC, ACAR)

Other BURNDY splice families coming soon!



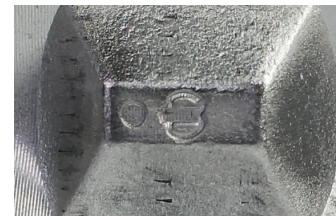
Specifications:

Output Force:	11 Tons
Tool Weight:	10.6 lbs
Size:	13.33" x 4.75" x 2.92"
Die Style:	Dieless
Operating Pressure:	10,000 PSI
Warranty:	5 year limited warranty

Accessories:

PT10054094:	Canvas carry bag (included with tool)
FORCEGAUGE11:	Force Test Gauge

*See Hydraulic Pumps and Hydraulic Hoses;
Pump Accessories
for other necessary equipment.*



Unique 444S Crimp
Embossment